

# Natural changes of population 1961 – 2022

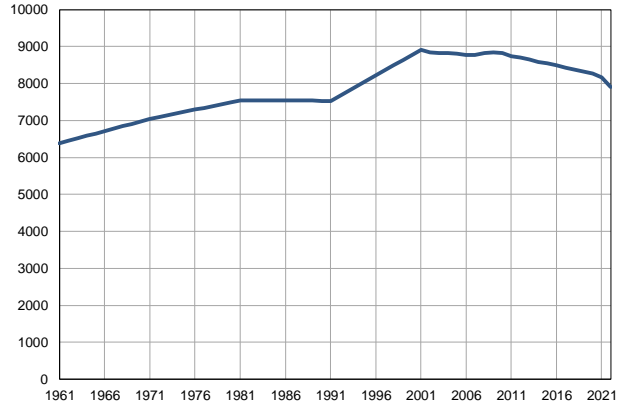
Profile  
July 2023

## Sremski Karlovci

	1961	2022
Population size	6390	7908
Livebirths, Number	87	68
Deaths, Number	69	146
Natural increase, Number	18	-78
Infants deaths, Number	9	0
Livebirths, per 1,000 population	14	9
Deaths, per 1,000 population	11	19
Natural increase, per 1,000 population	3	-10
Infants deaths, per 1,000 livebirths	103	0

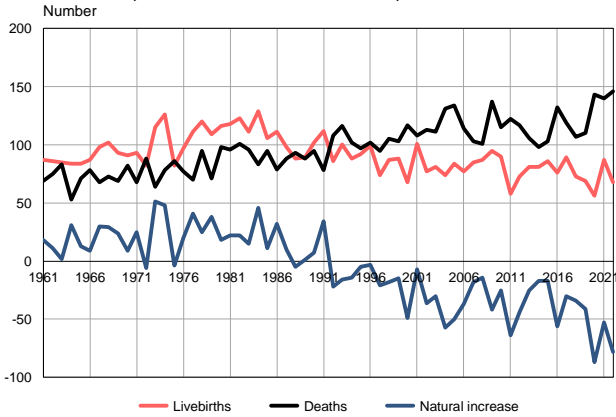
Source: Vital Statistics, SORS

Population size, 1961–2022



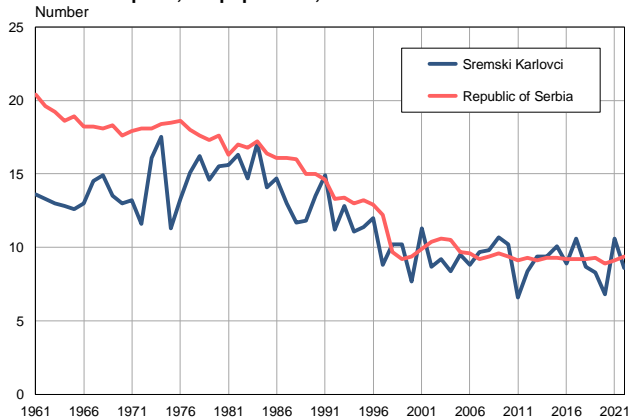
Source: Vital Statistics, SORS

Livebirths, deaths and natural increase, 1961–2022



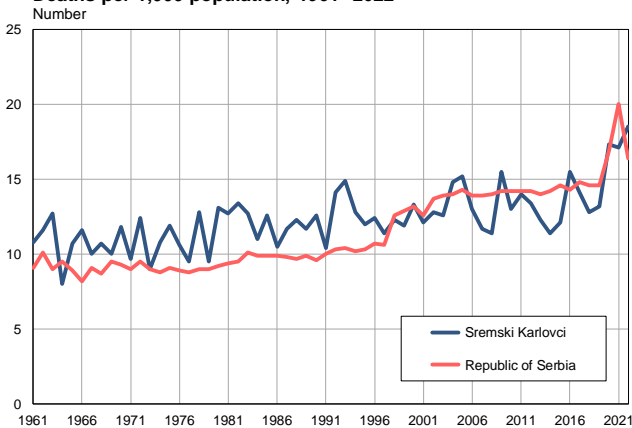
Source: Vital Statistics, SORS

Livebirths per 1,000 population, 1961–2022



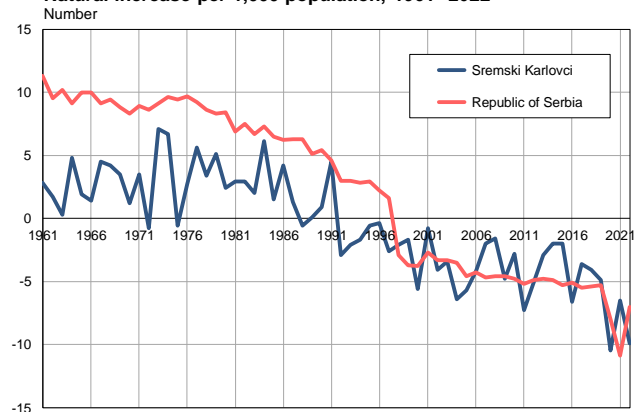
Source: Vital Statistics, SORS

Deaths per 1,000 population, 1961–2022



Source: Vital Statistics, SORS

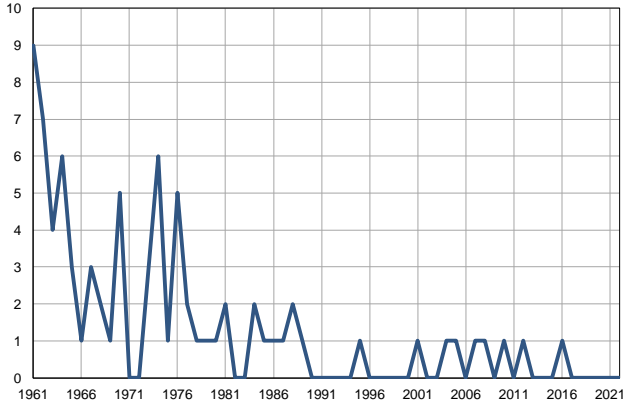
Natural increase per 1,000 population, 1961–2022



Source: Vital Statistics, SORS

**Infants deaths, 1961–2022**

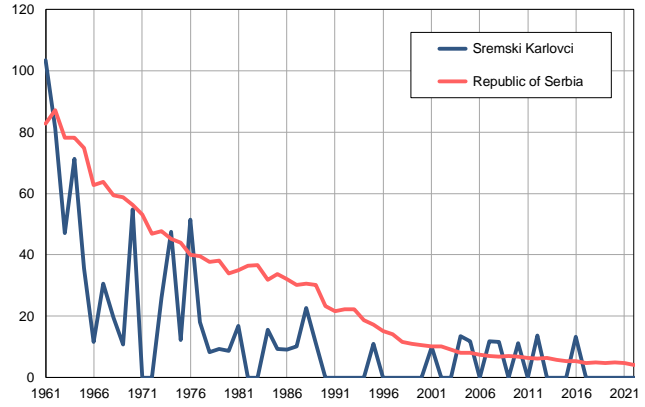
Number



Source: Vital Statistics, SORS

**Infants deaths per 1,000 livebirths, 1961–2022**

Number



Source: Vital Statistics, SORS

**Table. Natural changes of population, Sremski Karlovci**

Year	Number of population	Livebirths	Deaths	Natural increase	Infants deaths	per 1000 population			Infant deaths per 1000 livebirths
						Livebirths	Deaths	Natural increase	
1961	6390	87	69	18	9	13.6	10.8	2.8	103.4
1962	6455	86	75	11	7	13.3	11.6	1.7	81.4
1963	6520	85	83	2	4	13.0	12.7	0.3	47.1
1964	6585	84	53	31	6	12.8	8.0	4.8	71.4
1965	6650	84	71	13	3	12.6	10.7	1.9	35.7
1966	6715	87	78	9	1	13.0	11.6	1.4	11.5
1967	6780	98	68	30	3	14.5	10.0	4.5	30.6
1968	6845	102	73	29	2	14.9	10.7	4.2	19.6
1969	6910	93	69	24	1	13.5	10.0	3.5	10.8
1970	6975	91	82	9	5	13.0	11.8	1.2	54.9
1971	7040	93	68	25	0	13.2	9.7	3.5	0.0
1972	7090	82	88	-6	0	11.6	12.4	-0.8	0.0
1973	7141	115	64	51	3	16.1	9.0	7.1	26.1
1974	7192	126	78	48	6	17.5	10.8	6.7	47.6
1975	7243	82	86	-4	1	11.3	11.9	-0.6	12.2
1976	7294	97	77	20	5	13.3	10.6	2.7	51.5
1977	7345	111	70	41	2	15.1	9.5	5.6	18.0
1978	7395	120	95	25	1	16.2	12.8	3.4	8.3
1979	7445	109	71	38	1	14.6	9.5	5.1	9.2
1980	7496	116	98	18	1	15.5	13.1	2.4	8.6
1981	7547	118	96	22	2	15.6	12.7	2.9	16.9
1982	7546	123	101	22	0	16.3	13.4	2.9	0.0
1983	7544	111	96	15	0	14.7	12.7	2.0	0.0
1984	7543	129	83	46	2	17.1	11.0	6.1	15.5
1985	7542	106	95	11	1	14.1	12.6	1.5	9.4
1986	7541	111	79	32	1	14.7	10.5	4.2	9.0
1987	7539	98	88	10	1	13.0	11.7	1.3	10.2
1988	7538	88	93	-5	2	11.7	12.3	-0.6	22.7
1989	7537	89	88	1	1	11.8	11.7	0.1	11.2
1990	7535	102	95	7	0	13.5	12.6	0.9	0.0
1991	7534	112	78	34	0	14.9	10.4	4.5	0.0
1992	7673	86	108	-22	0	11.2	14.1	-2.9	0.0
1993	7811	100	116	-16	0	12.8	14.9	-2.1	0.0
1994	7950	88	102	-14	0	11.1	12.8	-1.7	0.0
1995	8089	92	97	-5	1	11.4	12.0	-0.6	10.9
1996	8228	99	102	-3	0	12.0	12.4	-0.4	0.0
1997	8366	74	95	-21	0	8.8	11.4	-2.6	0.0
1998	8505	87	105	-18	0	10.2	12.3	-2.1	0.0
1999	8644	88	103	-15	0	10.2	11.9	-1.7	0.0
2000	8783	68	117	-49	0	7.7	13.3	-5.6	0.0
2001	8921	101	108	-7	1	11.3	12.1	-0.8	9.9
2002	8844	77	113	-36	0	8.7	12.8	-4.1	0.0
2003	8827	81	111	-30	0	9.2	12.6	-3.4	0.0
2004	8824	74	131	-57	1	8.4	14.8	-6.4	13.5
2005	8809	84	134	-50	1	9.5	15.2	-5.7	11.9

**Table. Natural changes of population, Sremski Karlovci**

Year	Number of population	Livebirths	Deaths	Natural increase	Infants deaths	per 1000 population			Infant deaths per 1000 livebirths
						Livebirths	Deaths	Natural increase	
2006	8776	77	114	-37	0	8.8	13.0	-4.2	0.0
2007	8782	85	103	-18	1	9.7	11.7	-2.0	11.8
2008	8834	87	101	-14	1	9.8	11.4	-1.6	11.5
2009	8845	95	137	-42	0	10.7	15.5	-4.8	0.0
2010	8819	90	115	-25	1	10.2	13.0	-2.8	11.1
2011	8739	58	122	-64	0	6.6	14.0	-7.3	0.0
2012	8700	73	117	-44	1	8.4	13.4	-5.1	13.7
2013	8645	81	106	-25	0	9.4	12.3	-2.9	0.0
2014	8588	81	98	-17	0	9.4	11.4	-2.0	0.0
2015	8541	86	103	-17	0	10.1	12.1	-2.0	0.0
2016	8494	76	132	-56	1	8.9	15.5	-6.6	13.2
2017	8431	89	119	-30	0	10.6	14.1	-3.6	0.0
2018	8376	73	107	-34	0	8.7	12.8	-4.1	0.0
2019	8330	69	110	-41	0	8.3	13.2	-4.9	0.0
2020	8265	56	143	-87	0	6.8	17.3	-10.5	0.0
2021	8173	87	140	-53	0	10.6	17.1	-6.5	0.0
2022	7908	68	146	-78	0	8.6	18.5	-9.9	0.0

Source: Vital Statistics, SORS

## Definitions

### Population size

Number of population in the respective year. The data on the number of population in 1961, 1971, 1981 and 1991 are census data, while for the inter-census years the number of population was calculated as an average inter-census difference. From 2002 are given the population estimates that were calculated according to the census of population results and the annual statistics of natural mechanical population movements.

### Livebirths

Absolute number of live births in the course of a year. Live born child means a child giving vital signs after birth (breathing, i.e. heartbeat), even for the shortest time, regardless the mother's pregnancy duration.

### Deaths

Absolute number of deaths in the course of a year. Deceased is a person that whenever after having been born live, shows permanently stopped vital signs.

### Natural increase

Natural population increase is the number of live births minus the number of deaths.

### Infants deaths

Absolute number of infants deaths in the course of a year. Deceased infant is a child that after having been born live and before aged one year, shows permanently stopped vital signs.

### Livebirths, per 1 000 population

Livebirths rate is the ratio of the number of live births and the population size in the respective year. The number of live births is divided by the population size and then multiplied by 1000.

### Deaths, per 1 000 population

General mortality rate represents the ratio between the number of deaths and the population size in the respective year. The number of deaths is divided by population size and then multiplied by 1000.

### Natural increase, per 1 000 population

Natural population increase rate is the difference between the number of live births and the number of deaths, in relation to the population size in the respective year.

Natural population increase rate = (number of live births - number of deaths) / population size \* 1000

### Infants deaths, per 1 000 livebirths

Infant mortality rate is the ratio of deceased children under 1 year of age and live births in the respective year. The mortality rate is expressed per 1000 live births.

Infant mortality rate = (number of deceased children under 1 year of age / number of live births) \* 1000

## Additional info:



Download all database data in Excel format:

[Data](#)



DevInfo profiles:

[devinfo.stat.gov.rs/SerbiaProfileLauncher/?lang=en](http://devinfo.stat.gov.rs/SerbiaProfileLauncher/?lang=en)



DevInfo online database:

[devinfo.stat.gov.rs/vitalna](http://devinfo.stat.gov.rs/vitalna)



For additional information or questions please contact:

[devinfo@stat.gov.rs](mailto:devinfo@stat.gov.rs)